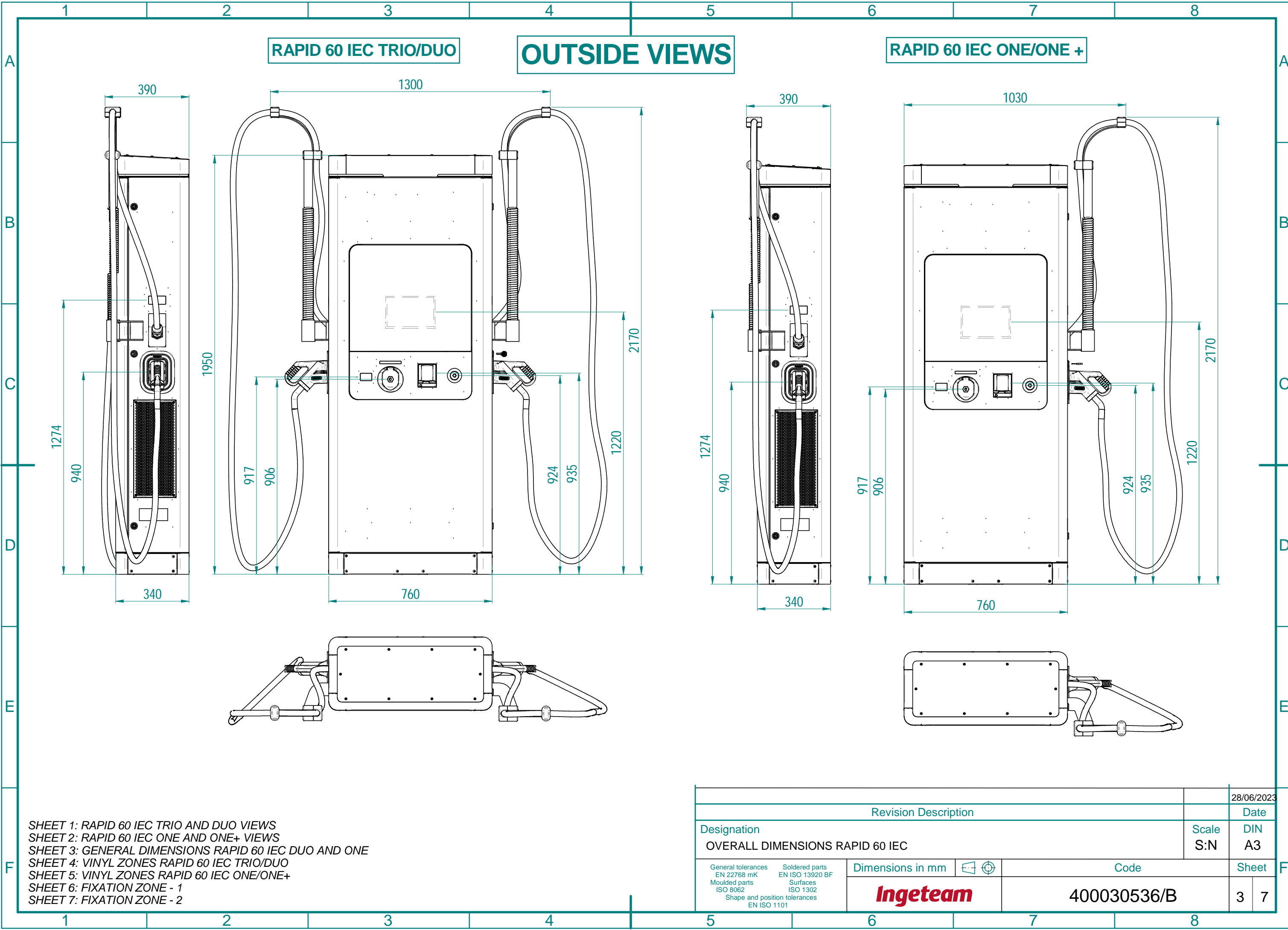


This present document and its contents are confidential, and are the exclusive intellectual and / or industrial property of INGETEAM S.A. in addition to any technology, design, invention, work, process, know-how, calculation, manual, method, solution, idea, improvement, drawing, diagram, modification, contribution and, in short, any associated information or documentation involving industrial or intellectual property developed or supplied by INGETEAM S.A. on the occasion of the quote, order execution or incorporated into the design or operation of the supply. The recipient may not use such property in his favour or in that of a third party for purposes other than the fulfillment of the order and the operation and maintenance of the supply, without the prior written consent of INGETEAM S.A. It is strictly forbidden to totally or partially reproduce this document and to misuse it and / or to show it to third parties. The infringing parties shall be required to pay the corresponding compensation for damages and any other legal or criminal responsibilities the infringement may give rise to.



SHEET 1: RAPID 60 IEC TRIO AND DUO VIEWS  
 SHEET 2: RAPID 60 IEC ONE AND ONE+ VIEWS  
 SHEET 3: GENERAL DIMENSIONS RAPID 60 IEC DUO AND ONE  
 SHEET 4: VINYL ZONES RAPID 60 IEC TRIO/DUO  
 SHEET 5: VINYL ZONES RAPID 60 IEC ONE/ONE+  
 SHEET 6: FIXATION ZONE - 1  
 SHEET 7: FIXATION ZONE - 2

		28/06/2023	
Revision Description		Date	
Designation		Scale	DIN
OVERALL DIMENSIONS RAPID 60 IEC		S:N	A3
General tolerances EN 22768 mK	Soldered parts EN ISO 13920 BF	Dimensions in mm	Code
Moulded parts ISO 8062	Surfaces ISO 1302		Sheet
Shape and position tolerances EN ISO 1101			400030536/B